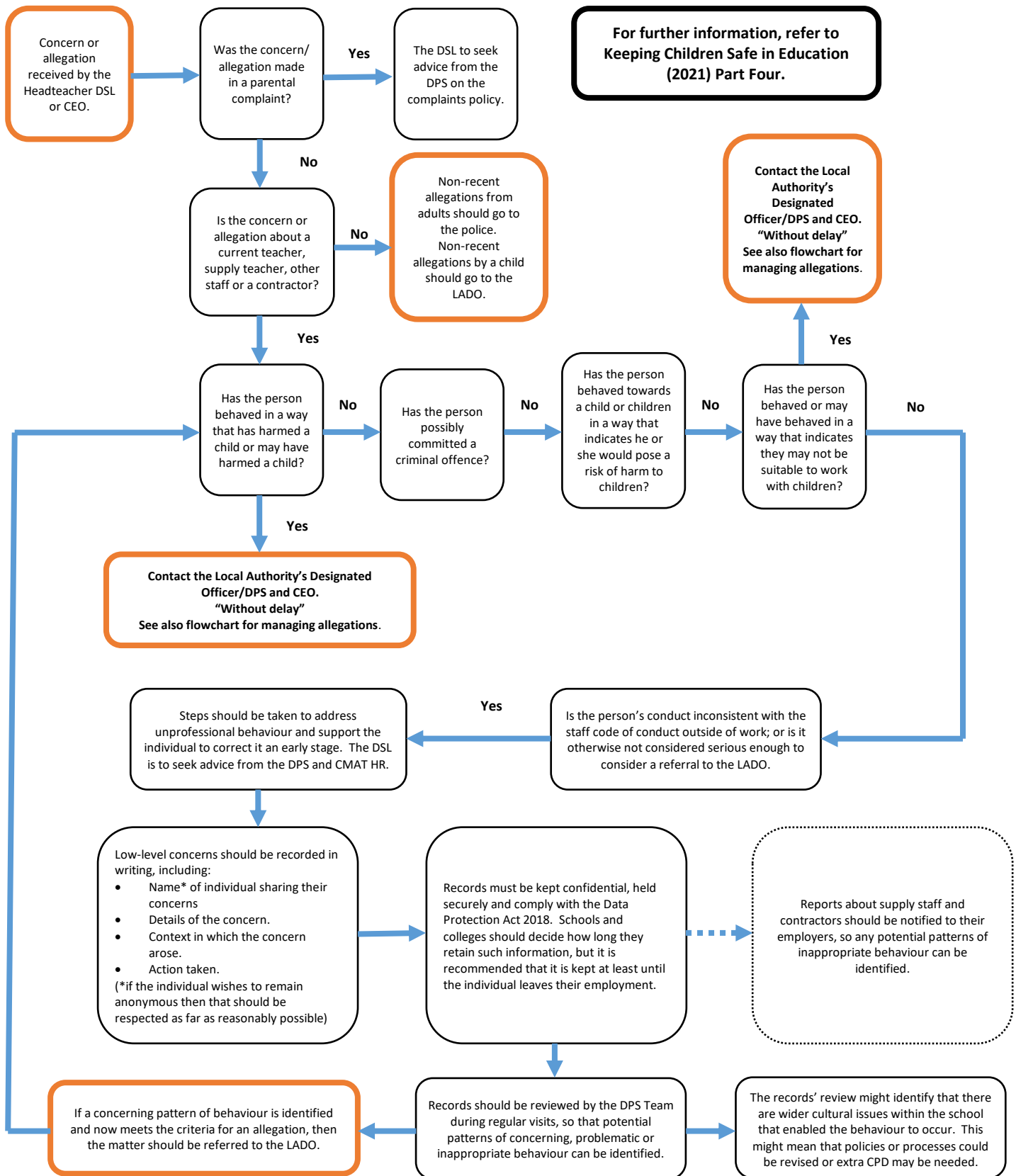


**Managing Low Level concerns raised made against/Concerns raised in relation to teacher, including supply teachers, other staff, volunteers.**



**What is a low level concern?**

The term "low-level" concern does not mean that it is insignificant, it means that the behaviour towards a child does not meet the threshold set out at KCSIE (2021) paragraph 338. A low-level concern is any concern – no matter how small, and even if no more than causing a sense of unease or a "nagging doubt" – that an adult working in or on behalf of the school or college may have acted in a way that:

- Is inconsistent with the staff case of conduct, including inappropriate conduct outside of work; and
- Does not meet the allegations threshold or is otherwise not considered serious enough a referral to the LADO.